

SHIMANO

SHIMANO EUROPA

Industrieweg 24 NL-8071 CT Nunspeet, Holland
Phone 31-3412-72222

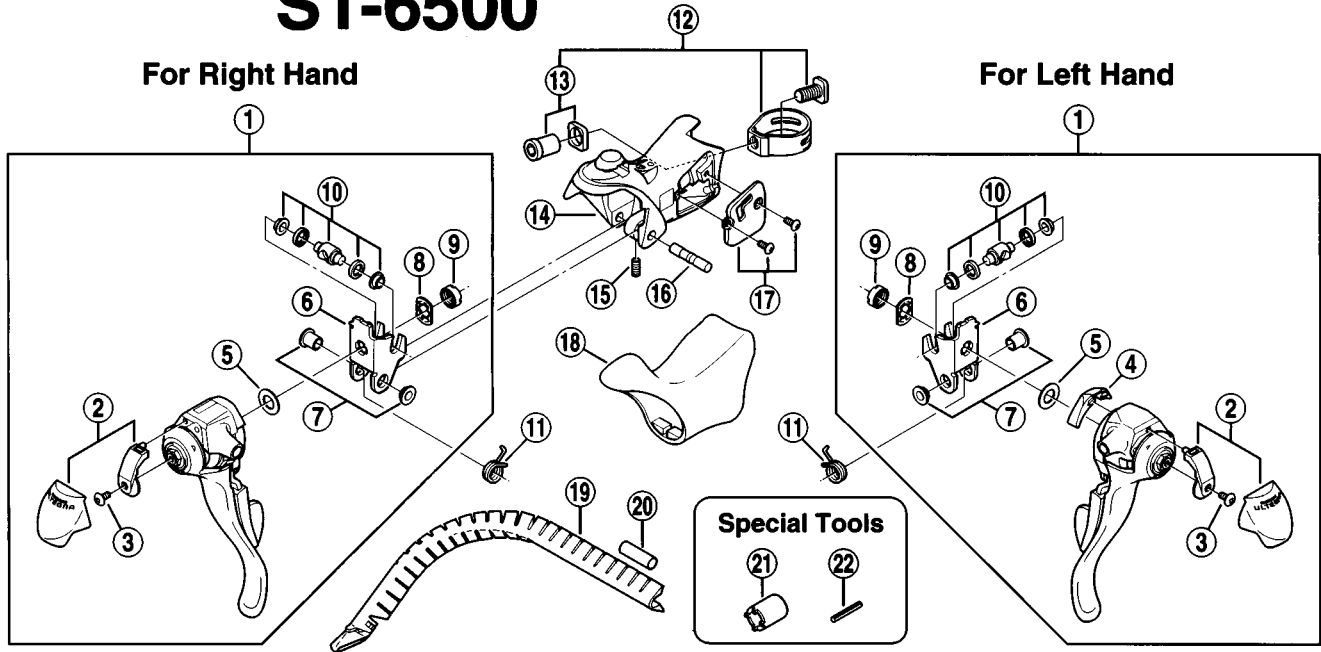
SHIMANO AMERICAN CORPORATION

One Shimano Drive, P.O. Box 19615, Irvine,
California U.S.A. 92623-9615 Phone 714-951-5003

Small parts list for after market.

- You may photocopy this sheet and use it as an order form.
- Sie können dieses Blatt kopieren und als Bestellformular verwenden.
- Vous pouvez photocopier cette feuille et l'utiliser comme bon de commande.
- Dit blad kan gecopieerd en als bestelformulier gebruikt worden.
- Potete fotocopiare questo foglio e usarlo come modulo di commissione.

SHIMANO ULTEGRA Dual Control Lever ST-6500



QTY	ITEM NO.	SHIMANO CODE NO.	DESCRIPTION
	1	6BS 9801	R.H. Main Lever Assembly
		6BS 9802	L.H. Main Lever Assembly
	2	6BS 9803	R.H. Name Plate & Front Cover
		6BS 9804	L.H. Name Plate & Front Cover
	3	6BS 4200	Front Cover Fixing Screw (M3 × 6)
	4	6BS 7100	L.H. Rear Cover
	5	6BS 7400	Adapter Spacer
	6	6BS 0300	R.H. Adapter
		6BS 5300	L.H. Adapter
	7	85Z 9801	Lever Axle Bush Unit
	8	6BD 3900	Non-Turn Washer
	9	66E 3300	Lock Nut
	10	6BD 9811	Cable Hook Unit
	11	6BD 7500	R.H. Return Spring
		6BD 7400	L.H. Return Spring
	12	6BD 9812	Clamp Band Unit (φ 23.8 mm – φ 24.2 mm)
	13	6BD 9813	Clamp Nut & Washer
	14	6BS 9805	R.H. Bracket
		6BS 9806	L.H. Bracket
	15	6BD 7600	Lever Axle Fixing Screw
	16	6BS 8400	Lever Axle
	17	6BS 9807	R.H. Bracket Cap & Fixing Screws (M3 × 6.35)
		6BS 9808	L.H. Bracket Cap & Fixing Screws (M3 × 6.35)
	18	6BS 9809	Bracket Covers (Pair)
	19	86B 9001	Outer Cable Guide
	20	877 1100	Outer Cable Joint
	21	130 0300	Lock Nut Removal Tool (TL-ST01)
	22	130 0310	Return Spring Installation Tool (TL-ST02)